

NEWS ON THE GREEN

THE NEWSLETTER OF THE GREEN STREET GREEN ASSOCIATION

Charity No. 1172661

September 2020 Issue 32



**ODEON CINEMA OPENED
25 AUGUST**

Village Society Committee

Chair:

William Sear



Green Street Green Association Trustees



Chair: Bob Trott



Sec: Margot Rohan



Treas: Alan Garelick



Jean Garelick



Ian Matheson

Our Councillors



Cllr Mike Botting



Cllr Angela Page



Cllr Samaris Huntington-Thresher

cde.bromley.gov.uk/mgMemberIndex.aspx

If you have any comments or want to get in touch, please visit the website:

www.GSGAssociation.weebly.com

FORMER PUBLIC CONVENIENCES

What is going on?



Malekos Estates Commercial Ltd purchased this site from the Council in 2013 and obtained change of use to offices in 2014. Now they have applied for planning permission to extend to a two-storey office building. Below is the link to the website article and updates: www.gsgvillagesociety.weebly.com/village-news/closure-of-public-toilets-risk-to-health

The deadline for comments was 18 August and 19 objections were submitted online. The main grounds identified are:

- **Overlooking** – second floor windows onto Manitoba Gardens;
- **Overshadowing** – the building extends approximately 12 feet in front of the Greenwood Centre;
- **Out of character** – there are no other buildings of this type or design and this side of the High Street is mainly residential;
- **Overdevelopment** – this is a small site with little outside space;
- **Parking** – the area has always had parking issues for residents in nearby roads where the properties have no garages;
- **Disabled facilities** – none shown;
- **Access to the site** – the application includes land owned by the Association which is the only way to access the property;
- **Fire exit route** from the rear of the Greenwood Centre – a deed of legal easement is needed to ensure the route is not impeded, unless suitable arrangements were made by LBB when the sale of the old toilet block took place.



Another Accident
(page 3)



Return to School
(page 4)



Above is an indication of the impact on the Greenwood Centre. Right is an impression of the appearance in the street scene.

Although, from a distance, the proposed building may not appear too unsightly, it being two storey will have a huge impact on adjacent properties.



ASSOCIATION AGM 2020

NEW DATE TBC in The Greenwood Centre

Visit the website for full details:

www.GSGAssociation.weebly.com/agm.html

CHAIRS' CHATS



Things are at last starting to move, although not necessarily for the better, as you will read in separate items in this edition. The old toilet block has reared its ugly head again, and there are more problems from the roundabout near Waitrose. Regarding the former, you can see what areas the Association has included in its objections as they are replicated in the article on page 1.

From a personal point of view I have been close to accidents at the roundabout, and it has always been traffic going towards Waitrose from the Crescent which has caused close shaves. It would be interesting to learn other people's experiences, as it might indicate to the Council exactly what needs attention.

At long last, the transfer of the parcels of land originally owned by Woolwich Homes Ltd has begun, and we now await the formal notification from our lawyers that the Land Registry has completed the arrangements. To some extent this is relevant to the toilet block application, as it means we will own land which users of the proposed offices would have to cross to access/egress the building, but it also gives us ownership of the majority of our fire escape route.

Work continues on planning how we would change the Greenwood Centre so as to achieve disabled access and install a suitable toilet, along with general improvements to the current toilet facilities. We are hoping a final – and hopefully positive – decision will be announced shortly, and meanwhile a further estimate for building costs is being obtained.

In view of problems associated with winter flu vaccinations and the COVID-19 restrictions applied in a small building, we have agreed to provide facilities free of charge, so the Greenwood Centre can be used by one of the village GP surgeries at weekends during the early winter period.

Lastly, with continuing easing of restrictions and the consequent ability of our Road Contacts to deliver our newsletter, we will shortly be returning to a more normal frequency of publication.

Bob Trott
Chairman of the Trustees

Dear Association Members

Well, another month has passed and what a month that has been from August the 1st, with the mysteries of Tesco for the first time, the newcomers from lockdown paying by card for the first time and forgetting their pin number!

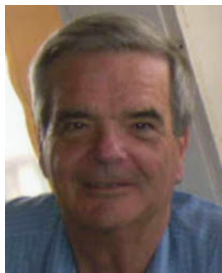
Blessed with this very hot summer and wearing my U3A hat, we have been able to meet outside in groups of six, and very pleasant indeed this has been. But sadly we still have the uncertainty of further lockdown or the frailty of our weather.

I am sure that Xmas will be a time when if restrictions can be relaxed they will be, but sadly I cannot see Father Christmas visiting our village hall this year.

I am pleased to say that we have had several shows of interest in joining our Committee, as and when social distancing is relaxed and we can go forward with a re-vigorated social programme, meeting up as a community again.

I wish you all well and am very aware of the price that many of you have paid in being isolated from friends and family for so long. Best wishes.

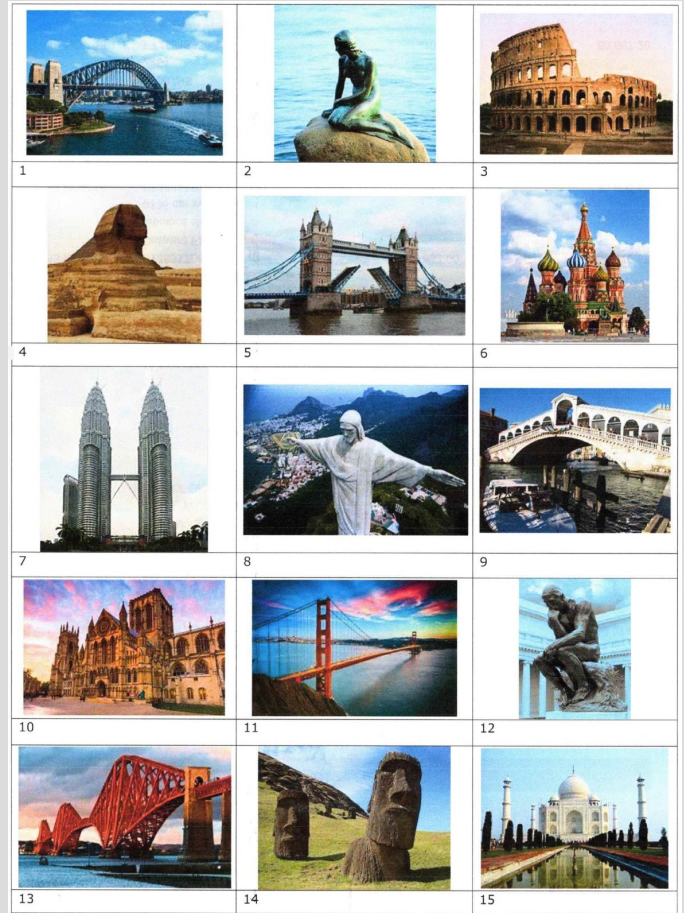
William Sear
Chairman of the Village Society Committee



MONUMENTS QUIZ

Can you identify these famous bridges, statues and buildings?

(Answers in October edition)



Answers to the August K9 Quiz:

- | | |
|-------------------------|------------------------|
| 1. Pomeranian | 11. Dachshund |
| 2. Akita | 12. Miniature Pinscher |
| 3. Jack Russell Terrier | 13. Labrador Retriever |
| 4. Shih Tzu | 14. Maltese |
| 5. Basset Hound | 15. Boxer |
| 6. Chow Chow | 16. Boston Terrier |
| 7. Australian Shepherd | 17. Beagle |
| 8. Basenji | 18. Japanese Chin |
| 9. Chihuahua | 19. Pekingese |
| 10. English Setter | 20. Collie |



Some useful phone numbers:

- * Silverline **0800 4 70 80 90**
- * Special Requirements List (SRL) - LBB Contact Centre helpline: **0208 464 3333** (for special services for vulnerable/elderly/disabled residents)
- * Morrisons 'elderly and vulnerable' FREE delivery service **0345 611 6111** (Option 5)

Covid Symptom Study

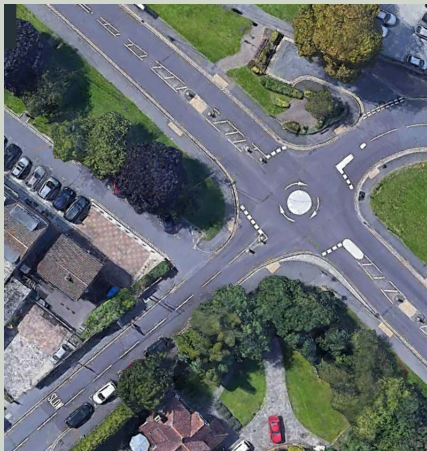
People of all ages and backgrounds are joining together to fight COVID-19
Support the NHS, help scientific research get us out of lockdown safely
Take 1 minute to report your health daily, even if you are well.

Download the App [here](#)

ANOTHER ACCIDENT

On Saturday 15 August there was another collision at the mini roundabout at the junction of Glen trammon Road and the High Street. Fortunately there were no serious injuries but it appears it was another case of a car going straight across without slowing down and stopping.

The signage is simply not obvious enough and too many drivers treat Sevenoaks Road as if they have right of way and do not even slow down when approaching the roundabout.



There is one flashing 30mph sign coming from the Crescent and the sign before the bus stop shows it is a roundabout but they are easily ignored by unobservant drivers.

The Council has tried some measures but they have not worked and, sadly, it will take a fatality on the roundabout before more drastic measures are implemented, unless someone comes up with a new solution.

OUR SAFER NEIGHBOURHOOD TEAM

PC Mano Vidamo, PC Aaron (Jock) Hewit, PCSO David Lillywhite

The next meeting will be in the autumn. Minutes for previous Ward Panel meetings can be viewed here:

www.gsgassociation.weebly.com/villagenews/chelsfield-pratts-bottom-safer-neighbourhood-ward-panel

For crime information use the following link:

www.met.police.uk/a/your-area/met/bromley/chelsfield-and-pratts-bottom

If you want to contact the local police team, please use the website contact form: www.met.police.uk/a/your-area/local-policing-team-contact/contact-your-local-policing-team.

Please only call 999 in an emergency.

For further information about Ward Panel meetings and to find out more about the position of Chair (still needed), please contact:

margot.rohan@yahoo.co.uk

The Bromley Safer Neighbourhood Chairs meeting on 17 August discussed various local issues via video conference, including:

- More use of speed cameras using volunteers
- More promotion of Safer Neighbourhood Ward Panels for wider engagement
- Concern about the increase in illegal electric scooters causing danger to children using them and public safety
- Catalytic converter thefts

THE MOVING CHURCH OF BIGGIN HILL

Biggin Hill has what must be the most unusual church in Bromley, St Mark's. It started life as All Saints Peckham and was moved brick by brick to Biggin Hill by the Rev Vivian Symons.

I came across St Mark's in the Chelsfield parish magazine, where the church was referred to with the understatement: "St Mark's is an interesting church." The snippet of information given was: "The windows are plain and have engravings done by the vicar with a dentist's drill!"

I was intrigued. St Mark's own website has a good account of the Church's history but you can also watch (on the internet) Pathe News outage from 1953 (www.youtube.com/watch?v=MWHuh0--Gv8). It is a very grainy black and white film but it shows just how this Moving Church caught the public's imagination. In the film we see the careful demolition of All Saints by the Rev Symons. He was, at that time, the perpetual curate of St Mark's, which could not become a parish until it had a church. It had become administratively independent of Cudham parish two years earlier.

Symons arrived at Biggin Hill in 1951 and found a temporary corrugated iron church. The population was nearly 4,000 but there was little prospect of replacing the temporary building, as the building



Rev Vivian Symons

(Picture Courtesy of St Mark's Church)

fund was only £2,600 and it had taken 50 years to raise that amount. In post war austerity Britain, a bit of lateral thinking was called for. He found a redundant late Victorian church - All Saints - in North Peckham, some 14 miles away, which was due to be demolished to make way for the North Peckham Estate. [This estate, where Damilola Taylor was murdered in November 2000, has now itself been demolished]. With the backing of the local diocese, Symons began to dismantle the church and to bring it to Biggin Hill - brick, stone, wood and tiles - in an old Morris lorry, given by a London builder.

He spent every available hour, sometimes with a small band of voluntary and inexperienced helpers, but more often than not on his own, bringing back lorry load after lorry load of bricks. The complete dismantling of All Saints took three years and four months and all that was left was a clean level site.

continued on page 4

GSG ASSOCIATION ANNUAL SUBSCRIPTION FOR 2020-21 STILL ONLY £2

If you would like to join or have not yet renewed your membership, please note you can pay **direct online** or **by standing order**:

Sort code: 30-96-31 **Account:** 02088234

Account Name: Green Street Green Association

Reference: Surname **AND** Membership no. or house no. & postcode **OR** by **cheque** posted to Alan Garelick, 25 Laxey Road, BR6 6BL

Membership Form: www.gsgassociation.weebly.com/join-the-village-society.html

Greenwood Quiz and Talk on 'History of Madeira' postponed
Visit the Members' Area on the website for future dates

RETURN TO SCHOOL

The government has announced that all pupils in all year groups will return to full-time education at the beginning of the autumn term. Published guidance to support all schools: www.gov.uk/government/publications/actions-for-schools-during-the-coronavirus-outbreak/guidance-for-full-opening-schools

Actions for early years and childcare providers during the COVID-19 outbreak: Since 1 June, early years settings, including childminders, have been able to welcome back children of all ages. Guidance for providers registered with Ofsted and childminders registered with childminder agencies for children of all ages: www.bromley.gov.uk/directory/34/directory_of_out_of_school_services/category/436

If your child cannot access their usual early years setting due to closure or lack of capacity, and you require a place, please email eyqualitymanager@bromley.gov.uk. They will do their best to accommodate your request.

Further Education

The government's plan is that all FE learners, whether young people or adults, will be able to return to further education settings in September and experience a full education. This applies to sixth form colleges, general further education colleges, independent training providers, adult community learning providers and special post-16 institutions.

Government guidance applies to adult as well as 16 to 19 learners. www.gov.uk/government/publications/16-to-19-study-programmes-guide-for-providers/16-to-19-study-programmes-guidance-2019-to-2020-academic-year

Special Schools

Guidance for the full opening of special schools and other specialist settings has been provided by the government. It sets out the actions special education leaders should take to minimise the risk of transmission in their setting. It highlights additional or different considerations for special educational settings compared to mainstream. The guidance includes school operations, curriculum, behaviour and pastoral support, assessment and accountability and contingency planning to provide continuity of education in the case of a local outbreak.

Additional information on the return to specialist educational settings for children and young people in Bromley is also available from the Local Offer: www.bromley.gov.uk/info/10122/disabled_children_and_young_people

Further guidance for all

Guidance for parents and carers on supporting children and young people's mental health and wellbeing during the coronavirus (COVID-19) pandemic. www.gov.uk/government/publications/covid-19-guidance-on-supporting-children-and-young-peoples-mental-health-and-wellbeing

Advice and guidance from the government for parents and carers: www.gov.uk/government/publications/closure-of-educational-settings-information-for-parents-and-carers/reopening-schools-and-other-educational-settings-from-1-june

Department for Education coronavirus helpline

If you have queries or concerns, the Department for Education coronavirus helpline is available to answer questions about COVID-19 relating to education and children's social care.

Staff, parents and young people can contact this helpline: **0800 046 8687** 8am - 6pm Mon-Fri, 10am - 4pm Sat/Sun

Bromley Council Covid information:

www.bromley.gov.uk/Covid-19

For **emergencies only** there is a helpline: **020 8313 4484**

continued from page 3

In Biggin Hill, 125,000 bricks, all cleaned and stacked - mostly by the ladies of St. Mark's - 200 tons of stonework and all of the roof timbers were safely stored on open land behind the vicarage. The intention had been to build the original church but the plans were lost so a new church was designed by Richard Gilbert Scott. Work then began clearing and levelling the ground ready for the foundations. Thanks to the loan of a mechanical shovel and a small dump truck, many back-aching hours were saved and, by 1958, all was set to start the actual building.

The building fund had risen to £5,330 by the generosity of many people, at home and all over the world, who had heard of The Moving Church from the widespread international publicity. A local builder, Durnells, built it on a no-profit basis.

Once he had finished his tour de force of moving the church, the Rev Symons wrote about the whole experience in The Moving Church which was first published in 1956. He was to publish a second volume, Church Maintenance, in 1968. By that time, he had left Biggin Hill and was head of religious education at Leyton County High School.

Whilst the building work was going on, all the ladies were sewing, embroidering and making the hassocks and pew covers, and the furniture was being made from £300 worth of English oak given by anonymous donors. The old stone was re-carved. It was then that the vicar turned his hand to engraving the windows, using a dentist's drill, and gifts of old gold and silver were transformed into the Altar Cross, Chalice, Alms Dish and Paten.

When the old corbel stones were re-set in the brickwork, Rev Symons borrowed a 50ft jib crane and lifted the roof trusses and purlins into position in three days. On Saturday, 25 April 1959, the church was consecrated by the Lord Bishop of Rochester.

Whether or not St Mark's is architecturally significant is open to question. What is not in doubt is that its genesis marks it out as an historic building, which was recognised in 2007 when it was given Grade II listed building status by the Government. Rev Symons died in 1976 at the age of 62.



St Mark's Church (Picture courtesy of St Mark's Church)

Can there possibly be any other church in Bromley with such an interesting genesis, or such an enterprising Vicar?

Christine Hellicar
Bromley Borough Local History
Society www.bbllhs.org.uk

If you have any comments or want to get in touch, please visit the website:
www.GSGAssociation.weebly.com